

# I-TREE

What can  
it do

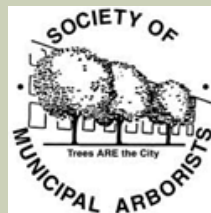
# WHAT IS I-TREE?

- i-Tree is a state-of-the-art, peer-reviewed software suite from the USDA Forest Service
- i-Tree provides urban and community forestry analysis and benefits assessment tools
- i-Tree is in the public domain and can be downloaded for free



# WHAT IS I-TREE?

- i-Tree was developed by USDA Forest Service and numerous cooperators, including Davey Tree Expert Company, National Arbor Day Foundation, Society of Municipal Arborists, International Society of Arboriculture, and Casey Trees, who work to further develop, disseminate and provide technical support for the suite.



# WHAT IS I-TREE?

- i-Tree is a suite of inventory software comprised of several different **APPLICATIONS** and **UTILITIES** designed to address a variety of inventory needs.
- The **APPLICATIONS** are the tools to quantify ecosystem services and benefit values of community trees at multiple scales
- The **UTILITIES** provide analyses that go beyond the reporting features offered in the applications.

# WHAT IS I-TREE?



- i-Tree is a sales tool, not a management tool.
- i-Tree helps to illustrate the argument that trees are an asset, and that management adds value by increasing return on investment.

# WHAT IS I-TREE?



[www.itreetools.org](http://www.itreetools.org)

# I-TREE APPLICATIONS

- i-Tree Eco (formerly UFORE)
  - Entire urban/community forest
- **i-Tree Streets (formerly STRATUM)**
  - **Street trees**
- i-Tree Hydro (beta)
  - How trees effect stream flow and water quality
- i-Tree Vue
  - Use NLCD imagery to assess your community's land cover
- **i-Tree Design (web based)**
  - **Assessment of individual or multiple trees at the parcel level**
- **i-Tree Canopy (web based)**
  - **Statistically valid estimate of land cover types**

# I-TREE UTILITIES

- **i-Tree Species**
  - Select species based on the environmental functions desired
- **i-Tree Pest Detection**
  - Standardized protocol for observing a tree for possible insect or disease problems
- **i-Tree Storm**
  - **Standardized method to assess widespread storm damage**
- **i-Tree Mobile Data Collection**
  - **Two options for mobile data collection (web-based and PDA utility)**
- **Mobile Community Tree Inventory (MCTI)**
  - Legacy utility provided for users who are still using previous versions of the stand alone MCTI utility



# I-TREE REPORTS

- **Benefit – Cost Analysis**
- **Resource Structural Analysis**
- Replacement Value
- Pest Analysis

# I-TREE REPORTS

## Benefit – Cost Analysis



## Annual Benefits

- Energy
- Stormwater
- Air Quality
- Carbon Dioxide
- Carbon Stored
- Aesthetic / Other Value
- Summary

# I-TREE REPORTS

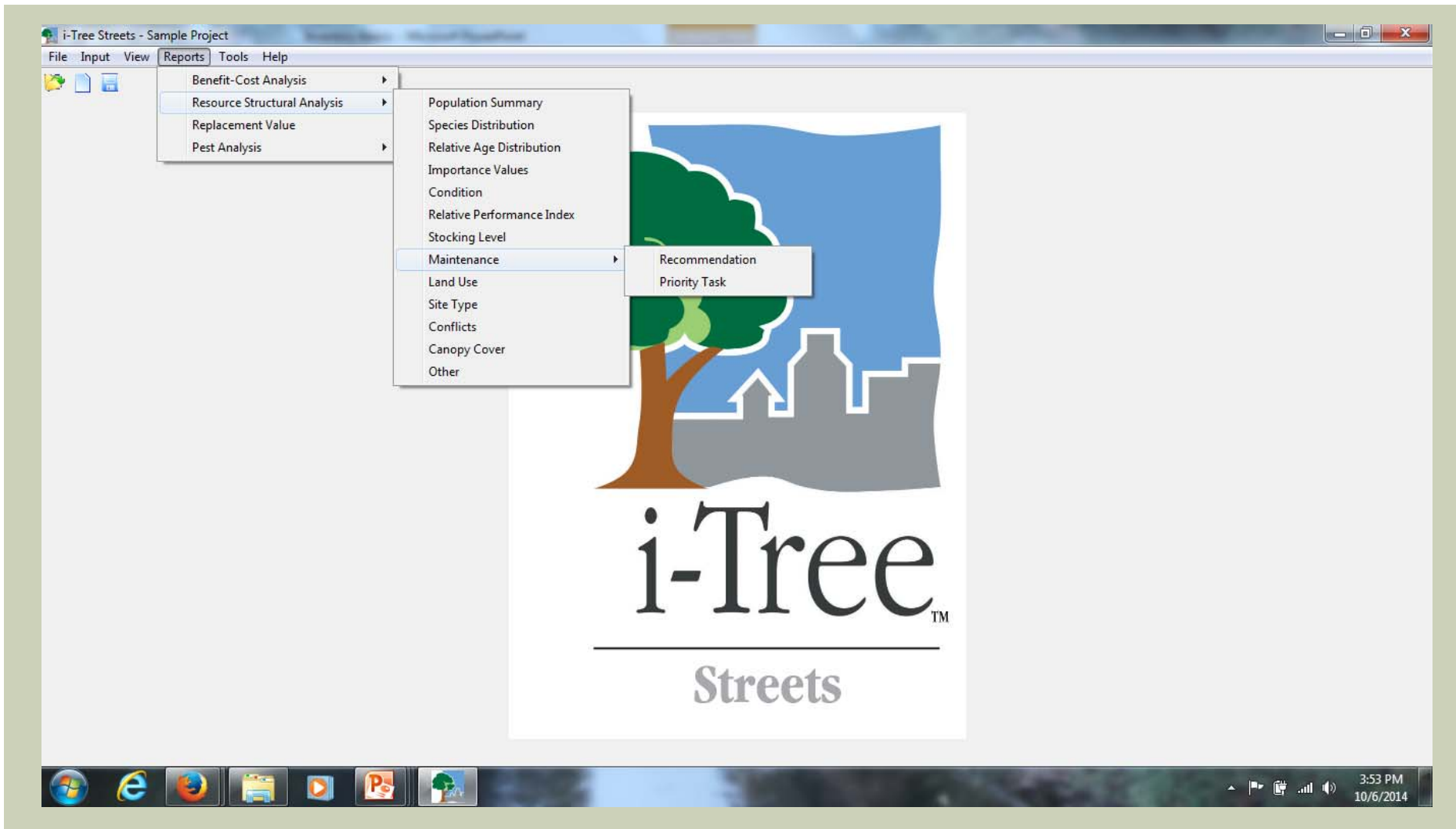
## ■ Resource Structural Analysis

- Population Summary
- Species Distribution
- Relative Age Distribution
- Importance Values
- Condition
- Relative Performance Index
- Stocking Level
- Maintenance Recommendations
- Land Use
- Site Type
- Conflicts
- Canopy Cover
- Other

# I-TREE REPORTS



# I-TREE REPORTS

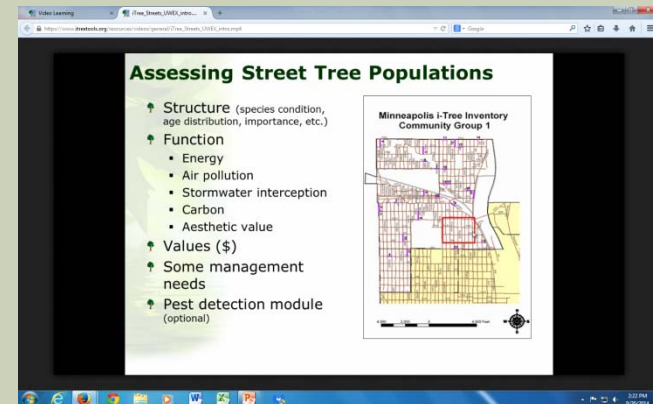


# I-TREE REPORTS



# I-TREE

- Website
  - Manuals & Workbooks
  - Video Tutorials
  - Technical Support (users forum)



# I-TREE

## i-Tree Streets: Key considerations

- Provides a "snap shot" in time
- Not for park trees
- No work history tracking
- Limited GIS compatibility
- Minimal data flexibility

